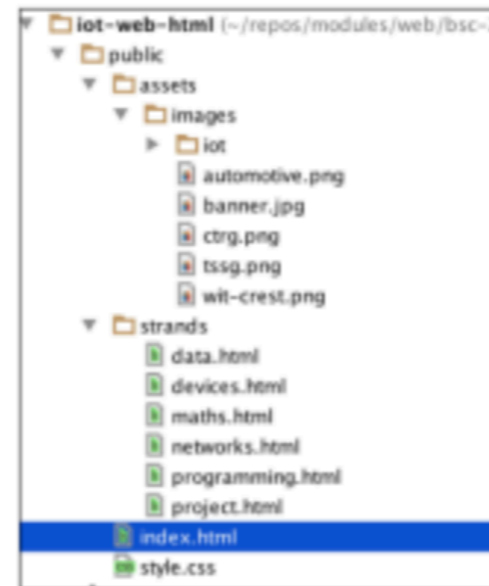


Web Site Case Study

Case Study



structure · layout · semantic
elements · fonts · web safe
fonts · images · picture element

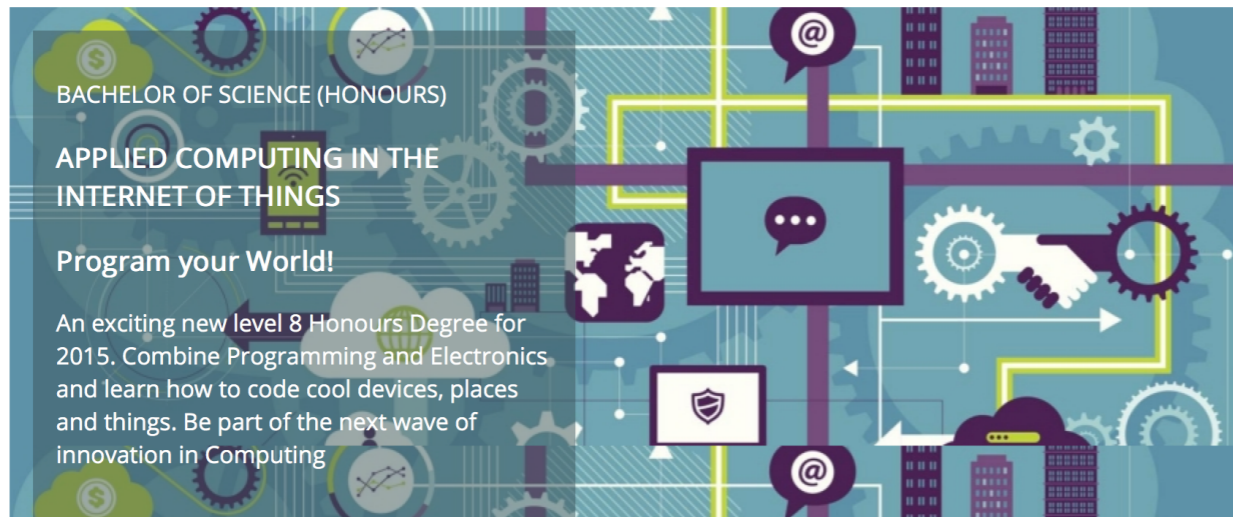
Lab-4b Case Study



header · main · nav · aside ·
article · footer · section ·
figure

Agenda

- Site Structure
- CSS Layout
- Semantic Elements
- Fonts
- Images



Programming

Learn a broad range of programming and problem solving skills, including exciting new platforms, software tools and languages. Use these skills to build apps for mobile, cloud and device based IoT applications. Evolve a portfolio of fascinating applications.

Data Science

At the heart of many IoT applications is data: measurements, events alarms and other information that must be relayed, stored and ultimately turned into knowledge. Learn the fundamentals of modern approaches to data in this strand.

Devices

The 'Things' we connect to are often physical devices. These can range from simple temperature sensors to sophisticated control systems like traffic lights or cameras. Connecting to and interacting with the physical world is the subject of this strand.

Networks

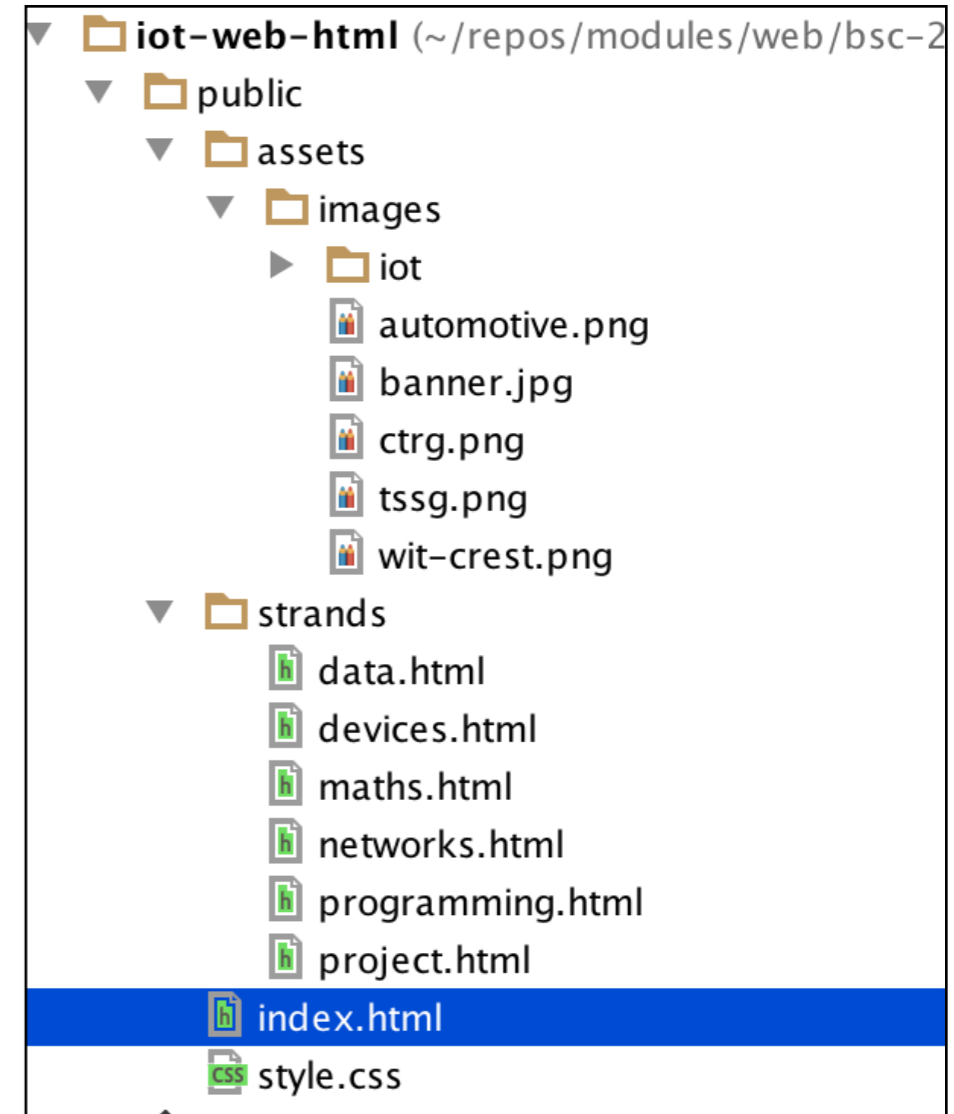
This strand will explore modern networks and cloud technology. Be able to configure, network and manage all categories of computer systems from simple controllers to single board computers, mobiles and full workstations.

Project

Building exciting IoT projects in every semester of the programme. Your projects will combine skills acquired from the other strands and enable you to build a comprehensive and compelling portfolio of IoT applications and services.

Mathematics

Introduce foundation concepts for many of the more applied concepts in the other Strands. Learn mathematical techniques in a modern context and apply core principles in new and interesting ways.



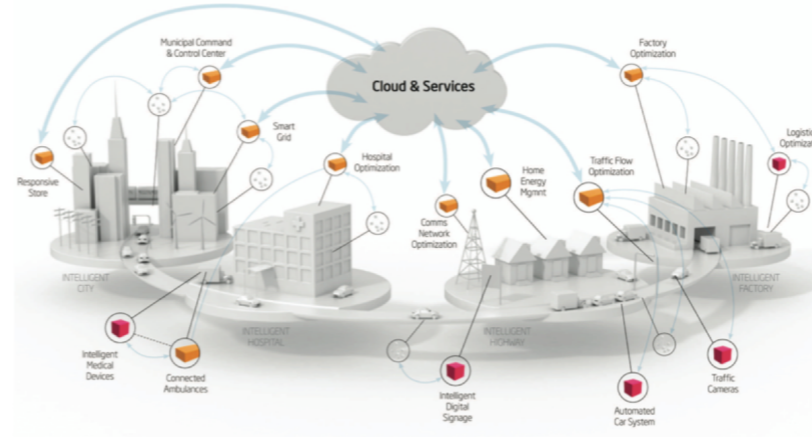
Supported by leading edge research at...





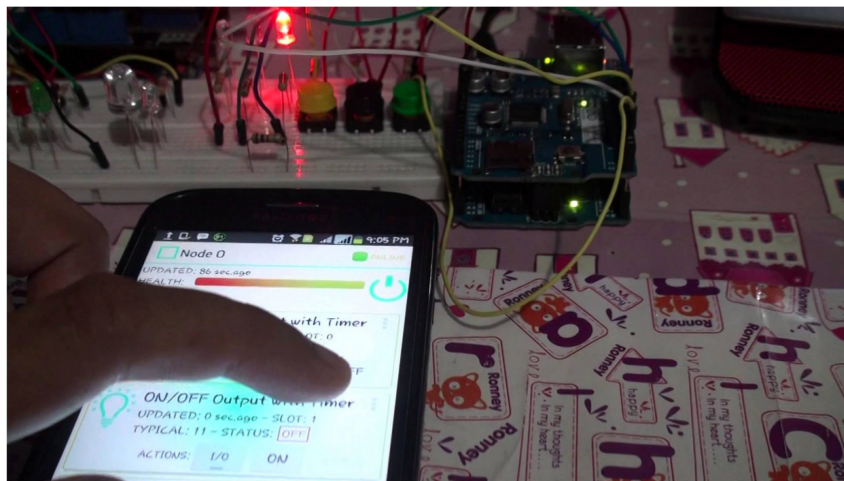
Data

The programme will promote an ethos of collaboration, practical application, and innovation. A project module will be included at each stage of the programme (apart from semester 1) that, through individual and collaborative projects, will challenge students to combine the knowledge and skills acquired in the various strands. Each project module will also elaborate on a theme, orthogonal to the programme disciplines, but central to the student's individual development.



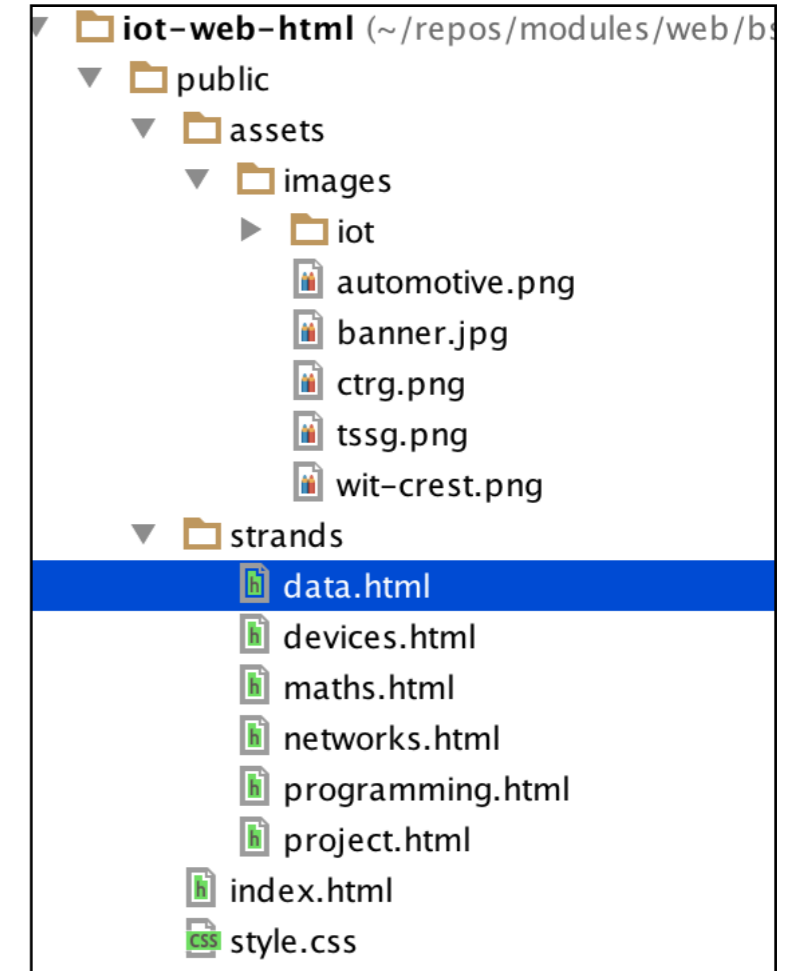
Year 1		Year 2		Year 3		Year 4	
Semester 1	Semester 2	Semester 3	Semester 4	Semester 5	Semester 6	Semester 7	Semester 8
The Computer Industry	Project	Project	Project	Project	Work Placement	Project	Project
					Study Abroad		Project

Project Learning Path



The project will be assessed via a single report and presentation each semester. The report will demonstrate an artefact of the student's choosing that integrates knowledge from two or more strands. This may be in the form of a software application, software/hardware combination, paper or combination of all of these. The 'Orthogonal' dimension must be addressed in the context of this report/presentation. The tuition team across each of the strands will stimulate project ideas and concepts for consideration by the students, who may take on board specific suggestions. Students as expected to proceed with ideas and concepts that particularly interest them individually, or collectively, in small teams.

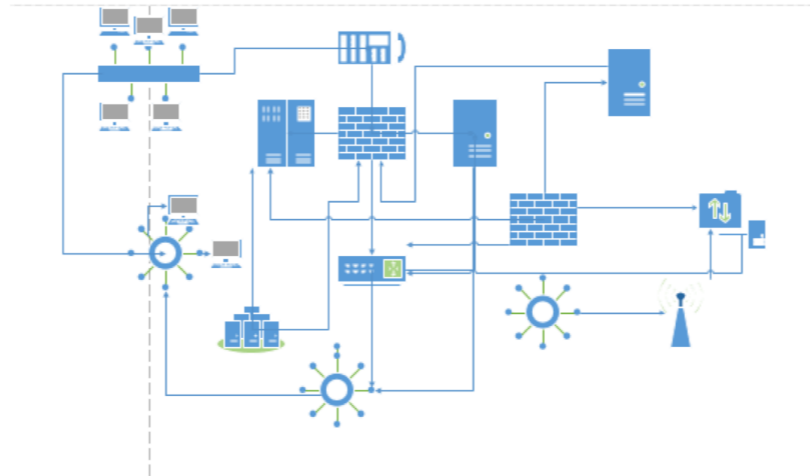
[facebook](#) [twitter](#) [linkedin](#)





Networks

The network, its configuration, management, and evolution, is at the heart of the IoT. Whether fixed, wireless, ad-hoc, sensor based, or hybrid, intelligent services and applications will derive much of their power from their participation in a secure and robust network. In this context, identity, privacy and trust are inherently bound into the hardware and software systems, which will embody key security principles in their operation and management. Given the magnitude and diversity of devices, network infrastructure automation and programmable infrastructure (a.k.a. infrastructure as code) are critical components of the IoT.

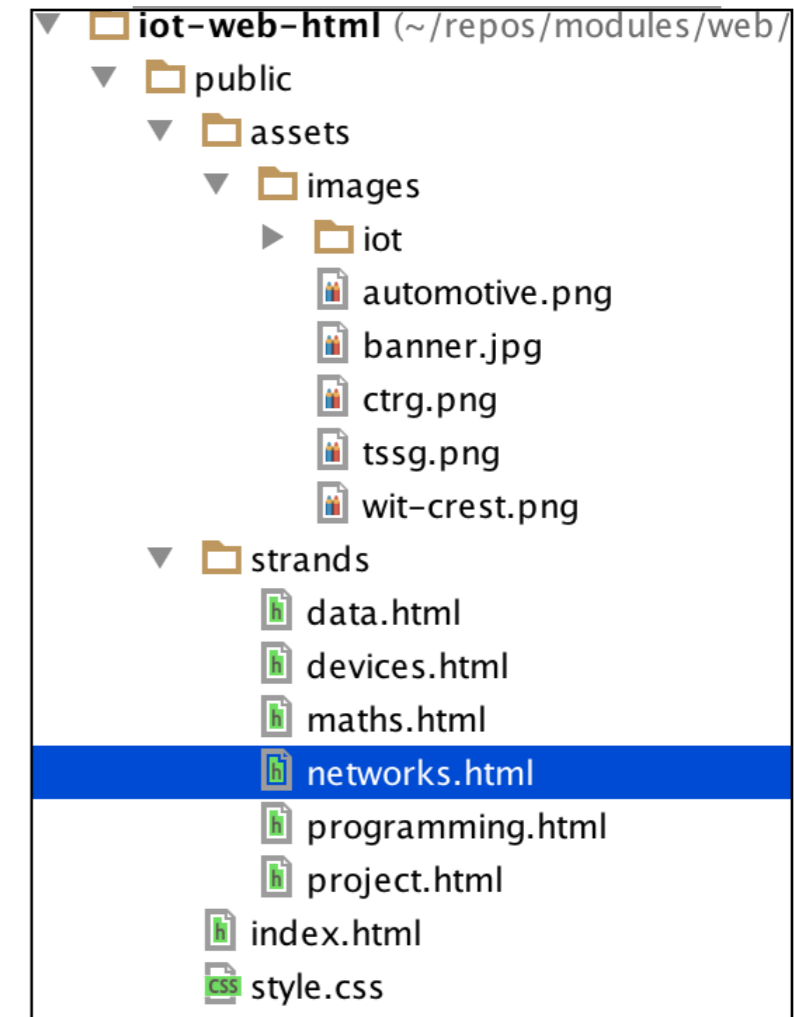


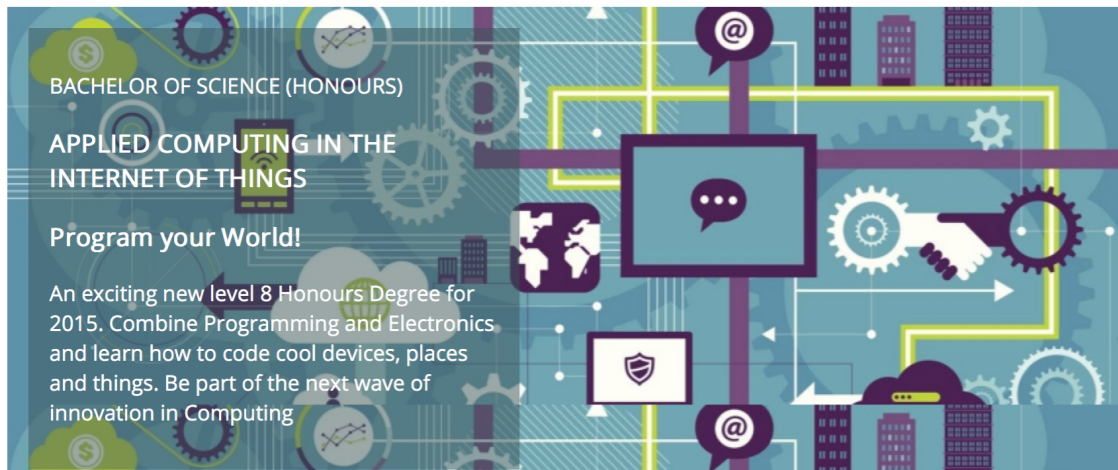
Networks Learning Path



The Networks & Cloud strand will begin with an introduction to Computer Architecture and Operating Systems in the first year. A practical approach to building and configuring systems, using single board computers such as the Raspberry Pi and Intel NUC, will be central to the student's learning environment. In the second year a more in depth coverage of networking is provided examining addressing, routing and networking protocols. Third year will see students explore the emerging area of DevOps and engage in the configuration, deployment and management of Cloud infrastructures. In the final year students will continue to work with Cloud Infrastructure technologies as well as taking a detailed look at device, system and network security.

[facebook](#) [twitter](#) [linkedin](#)





Programming

Learn a broad range of programming and problem solving skills, including exciting new platforms, software tools and languages. Use these skills to build apps for mobile, cloud and device based IoT applications. Evolve a portfolio of fascinating applications.

Data Science

At the heart of many IoT applications is data: measurements, events alarms and other information that must be relayed, stored and ultimately turned into knowledge. Learn the fundamentals of modern approaches to data in this strand.

Devices

The 'Things' we connect to are often physical devices. These can range from simple temperature sensors to sophisticated control systems like traffic lights or cameras. Connecting to and interacting with the physical world is the subject of this strand.

Networks

This strand will explore modern networks and cloud technology. Be able to configure, network and manage all categories of computer systems from simple controllers to single board computers, mobiles and full workstations.

Project

Building exciting IoT projects in every semester of the programme. Your projects will combine skills acquired from the other strands and enable you to build a comprehensive and compelling portfolio of IoT applications and services.

Mathematics

Introduce foundation concepts for many of the more applied concepts in the other Strands. Learn mathematical techniques in a modern context and apply core principles in new and interesting ways.

Supported by leading edge research at...



[facebook](#) [twitter](#) [linkedin](#)

```
<!DOCTYPE html>
<html lang="en">
<head...>
<body>

<header id="header">
  <h2>
    
    Department of Computing & Mathematics
  </h2>
  <h3> BSc (Hons) the Internet of Things </h3>
  <hr>
</header>

<article class="banner">
  <div id="summary">
    <p>
      BACHELOR OF SCIENCE (HONOURS)
    </p>

    <h3>
      APPLIED COMPUTING IN THE INTERNET OF THINGS
    </h3>

    <h3>
      Program your World!
    </h3>

    <p>
      An exciting new level 8 Honours Degree for 2015. Combine
      Programming and Electronics and learn how to code cool devices,
      places and things. Be part of the next wave of innovation in
      Computing
    </p>
  </div>
</article>

<article id="curriculum"...>

<section id="sponsors">
  <hr>
  <h4> Supported by leading edge research at... </h4>
  <p>
    
    
    
  </p>
</section>

<footer id="footer">
  <hr>
  <p class="footer-social-links">
    <a href="http://www.facebook.com/witcomp"> facebook </a>
    <a href="http://twitter.com/ComputingAtWIT"> twitter </a>
    <a href="https://ie.linkedin.com/pub/computing-at-wit/a9/221/1b6">
      linkedin </a>
  </p>
</footer>

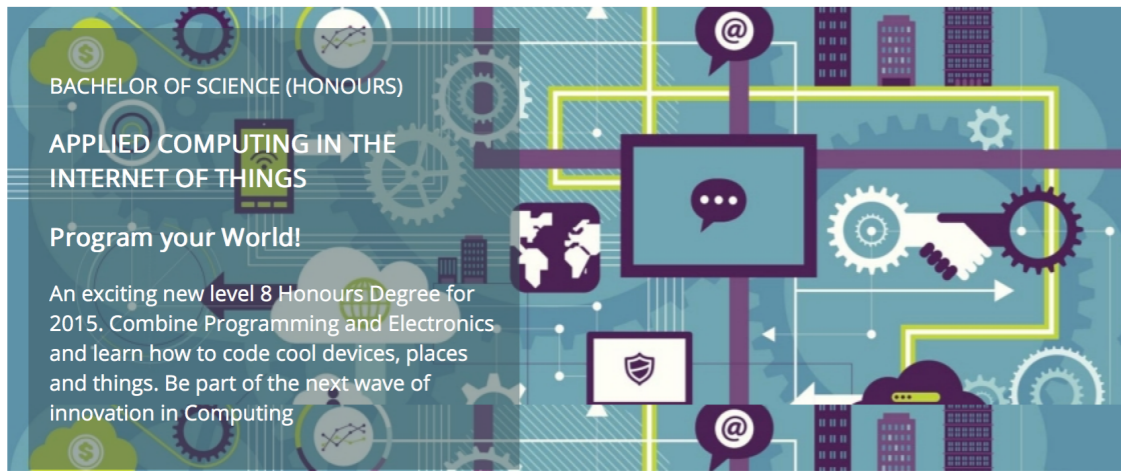
</body>
</html>
```


Department of Computing & Mathematics

BSc (Hons) the Internet of Things



Waterford Institute of Technology
INSTITIÚID TEICNEOLAÍOCHTA PHORT LÁIRGE



BACHELOR OF SCIENCE (HONOURS)

APPLIED COMPUTING IN THE INTERNET OF THINGS

Program your World!

An exciting new level 8 Honours Degree for 2015. Combine Programming and Electronics and learn how to code cool devices, places and things. Be part of the next wave of innovation in Computing

Programming

Learn a broad range of programming and problem solving skills, including exciting new platforms, software tools and languages. Use these skills to build apps for mobile, cloud and device based IoT applications. Evolve a portfolio of fascinating applications.

Data Science

At the heart of many IoT applications is data: measurements, events alarms and other information that must be relayed, stored and ultimately turned into knowledge. Learn the fundamentals of modern approaches to data in this strand.

Devices

The 'Things' we connect to are often physical devices. These can range from simple temperature sensors to sophisticated control systems like traffic lights or cameras. Connecting to and interacting with the physical world is the subject of this strand.

Networks

This strand will explore modern networks and cloud technology. Be able to configure, network and manage all categories of computer systems from simple controllers to single board computers, mobiles and full workstations.

Project

Building exciting IoT projects in every semester of the programme. Your projects will combine skills acquired from the other strands and enable you to build a comprehensive and compelling portfolio of IoT applications and services.

Mathematics

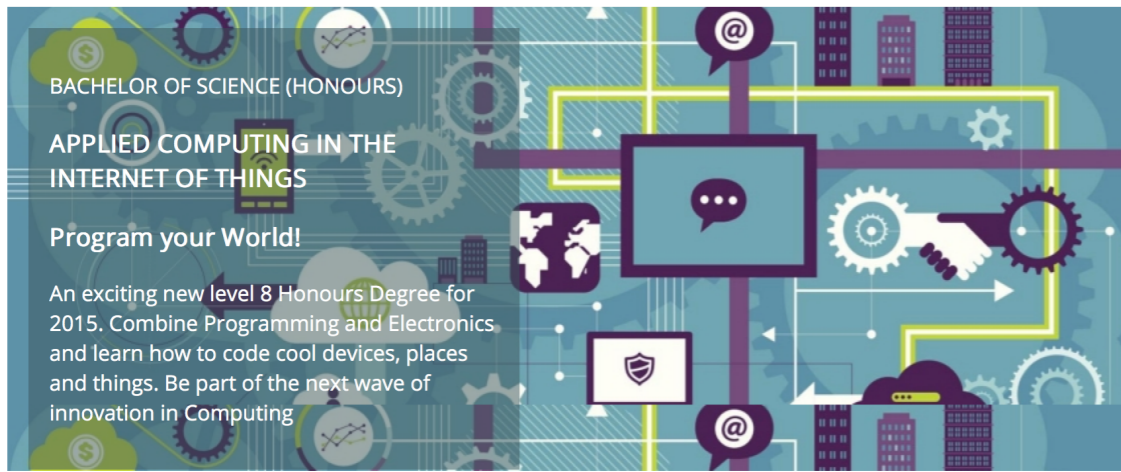
Introduce foundation concepts for many of the more applied concepts in the other Strands. Learn mathematical techniques in a modern context and apply core principles in new and interesting ways.

Supported by leading edge research at...



[facebook](#) [twitter](#) [linkedin](#)

```
<!DOCTYPE html>
<html lang="en">
<head...>
<body>
  <header id="header">
    <h2>
      
      Department of Computing & Mathematics
    </h2>
    <h3> BSc (Hons) the Internet of Things </h3>
    <hr>
  </header>
  <article class="banner">
    <div id="summary">
      <p>
        BACHELOR OF SCIENCE (HONOURS)
      </p>
      <h3>
        APPLIED COMPUTING IN THE INTERNET OF THINGS
      </h3>
      <h3>
        Program your World!
      </h3>
      <p>
        An exciting new level 8 Honours Degree for 2015. Combine Programming and Electronics and learn how to code cool devices, places and things. Be part of the next wave of innovation in Computing
      </p>
    </div>
  </article>
  <article id="curriculum"...>
    <section id="sponsors">
      <hr>
      <h4> Supported by leading edge research at... </h4>
      <p>
        
        
        
      </p>
    </section>
    <footer id="footer">
      <hr>
      <p class="footer-social-links">
        <a href="http://www.facebook.com/witcomp"> facebook </a>
        <a href="http://twitter.com/ComputingAtWIT"> twitter </a>
        <a href="https://ie.linkedin.com/pub/computing-at-wit/a9/221/1b6">
          linkedin </a>
      </p>
    </footer>
  </body>
</html>
```



BACHELOR OF SCIENCE (HONOURS)

APPLIED COMPUTING IN THE
INTERNET OF THINGS

Program your World!

An exciting new level 8 Honours Degree for 2015. Combine Programming and Electronics and learn how to code cool devices, places and things. Be part of the next wave of innovation in Computing

Programming

Learn a broad range of programming and problem solving skills, including exciting new platforms, software tools and languages. Use these skills to build apps for mobile, cloud and device based IoT applications. Evolve a portfolio of fascinating applications.

Data Science

At the heart of many IoT applications is data: measurements, events alarms and other information that must be relayed, stored and ultimately turned into knowledge. Learn the fundamentals of modern approaches to data in this strand.

Devices

The 'Things' we connect to are often physical devices. These can range from simple temperature sensors to sophisticated control systems like traffic lights or cameras. Connecting to and interacting with the physical world is the subject of this strand.

Networks

This strand will explore modern networks and cloud technology. Be able to configure, network and manage all categories of computer systems from simple controllers to single board computers, mobiles and full workstations.

Project

Building exciting IoT projects in every semester of the programme. Your projects will combine skills acquired from the other strands and enable you to build a comprehensive and compelling portfolio of IoT applications and services.

Mathematics

Introduce foundation concepts for many of the more applied concepts in the other Strands. Learn mathematical techniques in a modern context and apply core principles in new and interesting ways.

Supported by leading edge research at...



```
<article id="curriculum">
  <hr>
  <section id="col1">
    <h2><a href="strands/programming.html"> Programming </a></h2>
    <p>
      Learn a broad range of programming and problem solving skills,
      including exciting new platforms, software tools and languages. Use
      these skills to build apps for mobile, cloud and device based IoT
      applications. Evolve a portfolio of fascinating applications.
    </p>
    <h2><a href="strands/data.html"> Data Science </a></h2>
    <p>
      At the heart of many IoT applications is data: measurements, events
      alarms and other information that must be relayed, stored and
      ultimately turned into knowledge. Learn the fundamentals of modern
      approaches to data in this strand.
    </p>
    <h2><a href="strands/devices.html"> Devices </a></h2>
    <p>
      The 'Things' we connect to are often physical devices. These can
      range from simple temperature sensors to sophisticated control
      systems like traffic lights or cameras. Connecting to and
      interacting with the physical world is the subject of this strand.
    </p>
  </section>
  <section id="col2">
    <h2><a href="strands/networks.html"> Networks </a></h2>
    <p>
      This strand will explore modern networks and cloud technology. Be
      able to configure, network and manage all categories of computer
      systems from simple controllers to single board computers,
      mobiles and full workstations.
    </p>
    <h2><a href="strands/project.html"> Project </a></h2>
    <p>
      Building exciting IoT projects in every semester of the programme.
      Your projects will combine skills acquired from the other strands
      and enable you to build a comprehensive and compelling portfolio of
      IoT applications and services.
    </p>
    <h2><a href="strands/maths.html"> Mathematics </a></h2>
    <p>
      Introduce foundation concepts for many of the more applied concepts
      in the other Strands. Learn mathematical techniques in a modern
      context and apply core principles in new and interesting ways.
    </p>
  </section>
</article>
```



```

<!DOCTYPE html>
<html lang="en">
<head...>
<body>
<header id="header">
  <h2>
    
    Department of Computing & Mathematics
  </h2>
  <h3> BSc (Hons) the Internet of Things </h3>
  <hr>
</header>
<article class="banner">
  <div id="summary">
    <p>
      BACHELOR OF SCIENCE (HONOURS)
    </p>
    <h3>
      APPLIED COMPUTING IN THE INTERNET OF THINGS
    </h3>
    <h3>
      Program your World!
    </h3>
    <p>
      An exciting new level 8 Honours Degree for 2015. Combine
      Programming and Electronics and learn how to code cool devices,
      places and things. Be part of the next wave of innovation in
      Computing
    </p>
  </div>
</article>
<article id="curriculum"...>
<section id="sponsors">
  <hr>
  <h4> Supported by leading edge research at... </h4>
  <p>
    
    
    
  </p>
</section>
<footer id="footer">
  <hr>
  <p class="footer-social-links">
    <a href="http://www.facebook.com/witcomp"> facebook </a>
    <a href="http://twitter.com/ComputingAtWIT"> twitter </a>
    <a href="https://ie.linkedin.com/pub/computing-at-wit/a9/221/1b6">
      linkedin </a>
  </p>
</footer>
</body>
</html>

```

```

.header-crest-img
{
  float: right;
  margin: 1em;
}

.banner
{
  background: url("assets/images/banner.jpg") top center;
  background-position: top center;
  height: 350px;
}

#summary
{
  width: 40%;
  float: left;
  color: white;
  background : rgba(58,84,90, 0.5);
  margin : 1em;
  padding : 1em;
  clear: both;
}

#curriculum
{
  width: 100%;
  margin: .5em;
  padding: .5em;
  clear: both;
}

#sponsors
{
  width: 100%;
  clear: both;
}

#footer
{
  width: 100%;
  clear: both;
}

.footer-social-links
{
  text-align: center
}

```

Programming

Learn a broad range of programming and problem solving skills, including exciting new platforms, software tools and languages. Use these skills to build apps for mobile, cloud and device based IoT applications. Evolve a portfolio of fascinating applications.

Data Science

At the heart of many IoT applications is data: measurements, events alarms and other information that must be relayed, stored and ultimately turned into knowledge. Learn the fundamentals of modern approaches to data in this strand.

Devices

The 'Things' we connect to are often physical devices. These can range from simple temperature sensors to sophisticated control systems like traffic lights or cameras. Connecting to and interacting with the physical world is the subject of this strand.

Networks

This strand will explore modern networks and cloud technology. Be able to configure, network and manage all categories of computer systems from simple controllers to single board computers, mobiles and full workstations.

Project

Building exciting IoT projects in every semester of the programme. Your projects will combine skills acquired from the other strands and enable you to build a comprehensive and compelling portfolio of IoT applications and services.

Mathematics

Introduce foundation concepts for many of the more applied concepts in the other Strands. Learn mathematical techniques in a modern context and apply core principles in new and interesting ways.

```
<article id="curriculum">
  <hr>
  <section id="col1">
    <h2><a href="strands/programming.html"> Programming </a></h2>
    <p>
      Learn a broad range of programming and problem solving skills,
      including exciting new platforms, software tools and languages. Use
      these skills to build apps for mobile, cloud and device based IoT
      applications. Evolve a portfolio of fascinating applications.
    </p>
    <h2><a href="strands/data.html"> Data Science </a></h2>
    <p>
      At the heart of many IoT applications is data: measurements, events
      alarms and other information that must be relayed, stored and
      ultimately turned into knowledge. Learn the fundamentals of modern
      approaches to data in this strand.
    </p>
    <h2><a href="strands/devices.html"> Devices </a></h2>
    <p>
      The 'Things' we connect to are often physical devices. These can
      range from simple temperature sensors to sophisticated control
      systems like traffic lights or cameras. Connecting to and
      interacting with the physical world is the subject of this strand.
    </p>
  </section>
  <section id="col2">
    <h2><a href="strands/networks.html"> Networks </a></h2>
    <p>
      This strand will explore modern networks and cloud technology. Be
      able to configure, network and manage all categories of computer
      systems from simple controllers to single board computers,
      mobiles and full workstations.
    </p>
    <h2><a href="strands/project.html"> Project </a></h2>
    <p>
      Building exciting IoT projects in every semester of the programme.
      Your projects will combine skills acquired from the other strands
      and enable you to build a comprehensive and compelling portfolio of
      IoT applications and services.
    </p>
    <h2><a href="strands/maths.html"> Mathematics </a></h2>
    <p>
      Introduce foundation concepts for many of the more applied concepts
      in the other Strands. Learn mathematical techniques in a modern
      context and apply core principles in new and interesting ways.
    </p>
  </section>
</article>
```

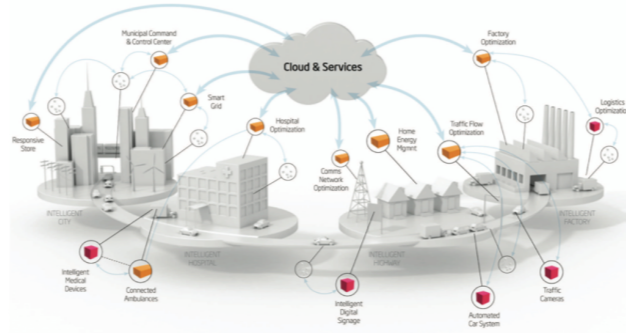
```
#curriculum
{
  width: 100%;
  margin: .5em;
  padding: .5em;
  clear: both;
}

#col1
{
  float: left;
  width: 48%;
}

#col2
{
  float: right;
  width: 48%;
}
```

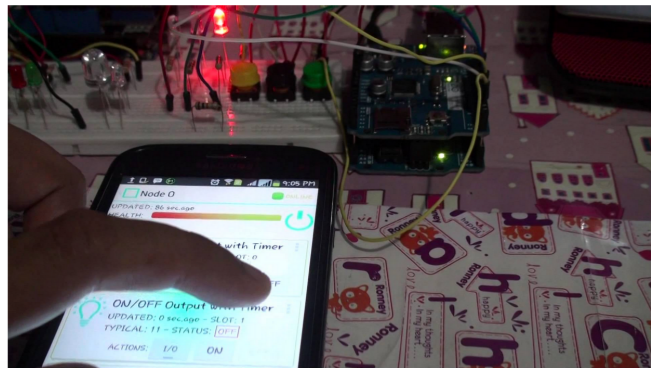
Data

The programme will promote an ethos of collaboration, practical application, and innovation. A project module will be included at each stage of the programme (apart from semester 1) that, through individual and collaborative projects, will challenge students to combine the knowledge and skills acquired in the various strands. Each project module will also elaborate on a theme, orthogonal to the programme disciplines, but central to the student's individual development.



Year 1		Year 2		Year 3		Year 4	
Semester 1	Semester 2	Semester 3	Semester 4	Semester 5	Semester 6	Semester 7	Semester 8
The Computer Industry	Project	Project	Project	Project	Work Placement	Project	Project
					Study Abroad		Project

Project Learning Path



The project will be assessed via a single report and presentation each semester. The report will demonstrate an artefact of the student's choosing that integrates knowledge from two or more strands. This may be in the form of a software application, software/hardware combination, paper or combination of all of these. The 'Orthogonal' dimension must be addressed in the context of this report. The strands will stimulate students, who may then proceed with ideas individually, or collectively.

```

.strand-right-img {
  float: right;
  margin: 1em;
  height: 350px;
}

.strand-left-img {
  float: left;
  margin: 1em;
  height: 350px;
}

.strand-timeline-img {
  height: 80px;
}

.strand-modules-img {
  height: 75px;
}

.strand-modules-double-img {
  height: 150px;
}

.strand-modules-treble-img {
  height: 310px;
}
    
```

```

<!DOCTYPE html>
<html lang="en">
<head...>
<body>

<header>
<h2>
  
  Department of Computing & Mathematics
</h2>
<h3>
  <a href="../index.html"> BSc (Hons) the Internet of Things </a>
</h3>
<hr>
</header>

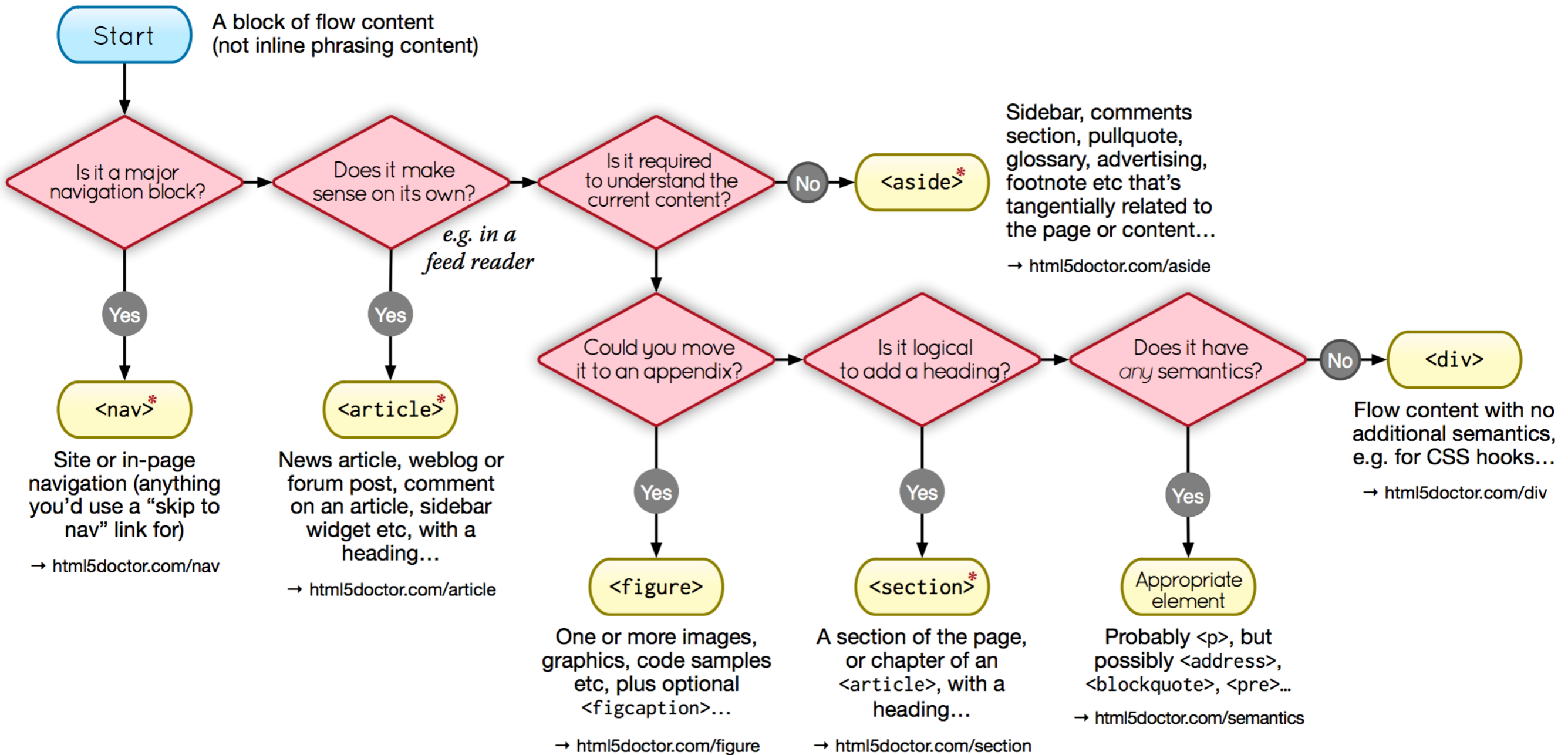
<article>
<h1> Devices </h1>
<p>
  
  The IoT professional must be comfortable when dealing with the many kinds of
  devices and systems that are the means for the Internet to interact with the
  environment. Such competence must be built on an awareness of the various means
  with which devices and systems perform, how they can be made to perform well and
  how their performance attributes may be changed
</p>
</article>

<figure>


</figure>

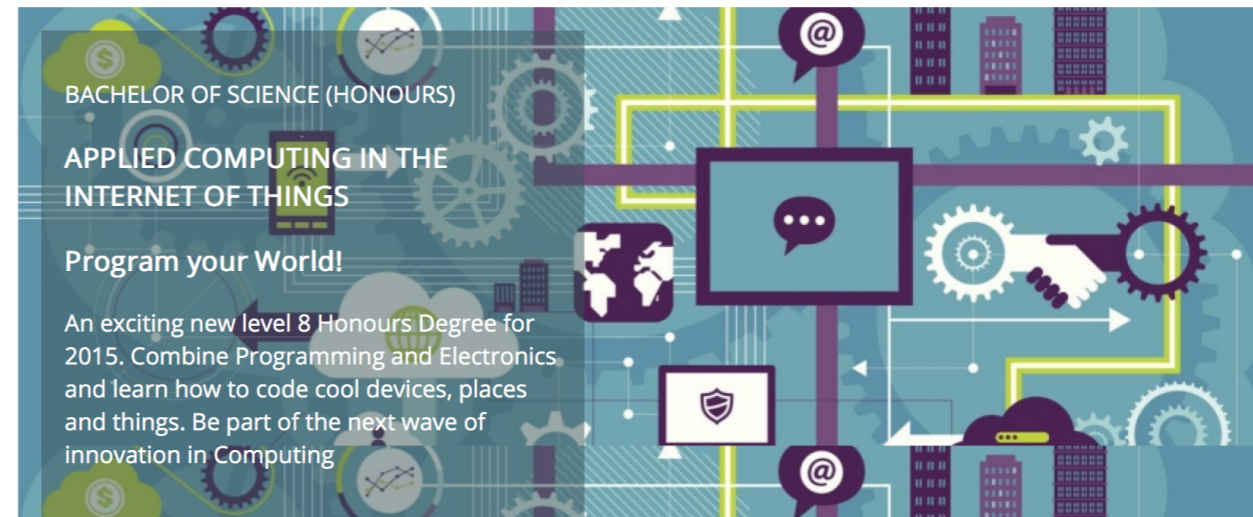
<article>
<h2> Devices Learning Path </h2>
<p>
  
  As a student on this programme, you will start to build this competence with the
  single board computer, the single board micro-controllers and fundamental analogue
  electronics, which when combined together will afford the environmental
  input-output capability with basic access to the network. The single board
  micro-controllers combined with the fundamental analogue topics will give ready
  access to the analogue and low-level digital world, whose key parameters of
  interest can be sensed and if necessary conditioned for conversion into digital
  form, as well as offering an effective actuation interface for analogue change.
  Protocol-defined communications covering all aspects from framing commands and
  information to the hierarchy of reliable communications, will open up the ability
  to convey information and commands over various media types and allow the
  candidates a complete education in more complex microcontroller based internet
  access points.
</p>
</article>

<footer>
<hr>
<p class="footer-social-links">
  <a href="http://www.facebook.com/witcomp"> facebook </a>
  <a href="http://twitter.com/ComputingAtWIT"> twitter </a>
  <a href="https://ie.linkedin.com/pub/computing-at-wit/a9/221/1b6"> linkedin </a>
</p>
</footer>
    
```

* Sectioning content element

These four elements (and their headings) are used by HTML5's outlining algorithm to make the document's outline
→ html5doctor.com/outline



```
<!DOCTYPE html>
<html lang="en">
<head...>
<body>
<header id="header"...>
<article class="banner"...>
<article id="curriculum">
  <hr>
  <section id="col1"...>
  <section id="col2"...>
</article>
<section id="sponsors"...>
<footer id="footer"...>
</body>
</html>
```

Programming

Learn a broad range of programming and problem solving skills, including exciting new platforms, software tools and languages. Use these skills to build apps for mobile, cloud and device based IoT applications. Evolve a portfolio of fascinating applications.

Data Science

At the heart of many IoT applications is data: measurements, events alarms and other information that must be relayed, stored and ultimately turned into knowledge. Learn the fundamentals of modern approaches to data in this strand.

Devices

The 'Things' we connect to are often physical devices. These can range from simple temperature sensors to sophisticated control systems like traffic lights or cameras. Connecting to and interacting with the physical world is the subject of this strand.

Networks

This strand will explore modern networks and cloud technology. Be able to configure, network and manage all categories of computer systems from simple controllers to single board computers, mobiles and full workstations.

Project

Building exciting IoT projects in every semester of the programme. Your projects will combine skills acquired from the other strands and enable you to build a comprehensive and compelling portfolio of IoT applications and services.

Mathematics

Introduce foundation concepts for many of the more applied concepts in the other Strands. Learn mathematical techniques in a modern context and apply core principles in new and interesting ways.

Supported by leading edge research at...



Department of Computing & Mathematics

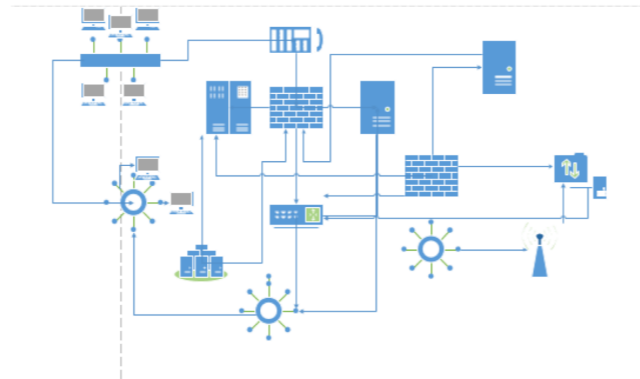
[BSc \(Hons\) the Internet of Things](#)



Waterford Institute of Technology
INSTITIÚID TEICNEOLAÍOCHTA PHORT LAIRGE

Networks

The network, its configuration, management, and evolution, is at the heart of the IoT. Whether fixed, wireless, ad-hoc, sensor based, or hybrid, intelligent services and applications will derive much of their power from their participation in a secure and robust network. In this context, identity, privacy and trust are inherently bound into the hardware and software systems, which will embody key security principles in their operation and management. Given the magnitude and diversity of devices, network infrastructure automation and programmable infrastructure (a.k.a. infrastructure as code) are critical components of the IoT.



Networks Learning Path



The Networks & Cloud strand will begin with an introduction to Computer Architecture and Operating Systems in the first year. A practical approach to building and configuring systems, using single board computers such as the Raspberry Pi and Intel NUC, will be central to the student's learning environment. In the second year a more in depth coverage of networking is provided examining addressing, routing and networking protocols. Third year will see students explore the emerging area of DevOps and engage in the configuration, deployment and management of Cloud infrastructures. In the final year students will continue to work with Cloud Infrastructure technologies as well as taking a detailed look at device, system and network security.

[facebook](#) [twitter](#) [linkedin](#)

```
<!DOCTYPE html>
<html lang="en">
<head...>
<body>
<header...>
<article...>
<figure...>
<article...>
<footer...>
</body>
</html>
```

<http://www.cssfontstack.com/>

- Web Safe Fonts:
 - Pre-installed by many operating systems. While not all systems have the same fonts installed, you can use a web safe font stack to choose several fonts that look similar, and are installed on the various systems that you want to support.
- Web Fonts
 - Web fonts are not pre-installed but are downloaded by the browser while rendering the webpage. May slow slow your site's load time.
- Common Pattern: If using a web font, include it first followed by similar series web safe fonts. If a browser is unable to use the web font it will fall back on the web safe fonts in the stack.

Web Safe

Sans-serif










Serif

Monospaced










Fantasy

Script



Sans-serif

Arial  Win: 99.84% Mac: 98.74%	Arial Black  Win: 98.08% Mac: 96.22%	Arial Narrow  Win: 88.39% Mac: 94.77%
Arial Rounded MT Bold  Win: 59.53% Mac: 95.14%	Avant Garde  Win: 0% Mac: 1.08%	Calibri  Win: 83.41% Mac: 38.74%
Candara  Win: 83.08% Mac: 34.41%	Century Gothic  Win: 87.62% Mac: 53.15%	Franklin Gothic Medium  Win: 99.18% Mac: 2.1%

Serif

Big Caslon  Win: 0% Mac: 92.61%	Bodoni MT  Win: 55.81% Mac: 0%	Book Antiqua  Win: 86.09% Mac: 49.01%
Calisto MT  Win: 58.43% Mac: 46.31%	Cambria  Win: 83.35% Mac: 35.32%	Didot  Win: 0% Mac: 93.51%
Garamond  Win: 86.47% Mac: 49.91%	Georgia  Win: 99.4% Mac: 97.48%	Goudy Old Style  Win: 58.11% Mac: 47.57%

Monospaced

Consolas  Win: 82.97% Mac: 34.77%	Courier New  Win: 99.73% Mac: 95.68%	Lucida Console  Win: 99.18% Mac: 0%
Lucida Sans Typewriter  Win: 74.81% Mac: 99.64%	Monaco  Win: 2.74% Mac: 99.82%	Andale Mono  Win: 4.16% Mac: 94.59%

Fantasy

COPPERPLATE  Win: 66.87% Mac: 92.61%

Script

Brush Script MT  Win: 59.64% Mac: 90.99%

Font	Size	Weight	Style
Helvetica Full Stack	Select One: ▾	Select One: ▾	Select One: ▾
Variant	Line Height		
Select One: ▾	Select One: ▾		
Apply To			
Header ▾	Save Heading Setting		

```

HTML:
<h1></h1>
CSS:
h1 {
  font-family: 'Helvetica Neue', Helvetica, Arial, sans-serif;
  font-size: 24px;
  font-style: normal;
  font-variant: normal;
  font-weight: 500;
  line-height: 26.4px;
}
h3 {
  font-family: 'Helvetica Neue', Helvetica, Arial, sans-serif;
  font-size: 14px;
  font-style: normal;
  font-variant: normal;
  font-weight: 500;
  line-height: 15.4px;
}
p {
  font-family: 'Helvetica Neue', Helvetica, Arial, sans-serif;
  font-size: 14px;
  font-style: normal;
  font-variant: normal;
  font-weight: 400;
  line-height: 20px;
}

```

E.g: Helvetica

Your headline is in Helvetica

This is a sub heading in Helvetica.

This paragraph is in Helvetica. Keep reading for how to use the buttons to the left. Change your settings, and choose what section you want the font to apply to. Once you are pleased with the settings for that section you can click save. Your selections will remain as you look for another font for another section of this preview.

Another sub heading in Helvetica.

The setting for a paragraph continues down here. There is a blockquote next to it. You may want to make that stand out. The setting for a paragraph continues down here. There is a blockquote next to it. You may want to make that stand out. The setting for a paragraph continues down here. There is a blockquote next to it. You may want to make that stand out.

Make other Helvetica text stand out!

```

/* This text is in Helvetica */
.class {
  font-family: Helvetica Neue,Helvetica,Arial,sans-serif;
}

```

Web

- Sans-serif
- Serif**
- Cursive

Serif

Adamina		Alice		Alike	
Alike Angular		Andada		Arapey	
Artifika		Arvo		Bentham	
Bevan		Bitter		Brawler	

Sans-serif

Abel		Aclonica		Actor	
Aldrich		Allerta		Allerta Stencil	
Amaranth		Andika		Anonymous Pro	
Antic		Anton		Arimo	
Bowlby One		BOWLBY ONE SC		Buda	
Cabin		Cabin Condensed		Cagliostro	
Candal		Cantarell		Carme	
Carter One		Chivo		Coda Caption	

Architects Daughter		Asset	
Atomic Age		Rubrey	
Bigshot One		Black Ops One	
BUTCHERMAN CAPS		Cabin Sketch	
Cedarville Cursive		Changa One	
Chewy		Chicle	

Calligraphitti	
Cherry Cream Sc	
Coda	

HTML:

```
<link rel="stylesheet" type="text/css" href="//fonts.googleapis.com/css?family=Open+Sans" />
```

CSS:

```
h1 {
    font-family: 'Open Sans';
    font-size: 24px;
    font-style: normal;
    font-variant: normal;
    font-weight: 500;
    line-height: 26.4px;
}
h3 {
    font-family: 'Open Sans';
    font-size: 14px;
    font-style: normal;
    font-variant: normal;
    font-weight: 500;
    line-height: 15.4px;
}
p {
    font-family: 'Open Sans';
    font-size: 14px;
    font-style: normal;
    font-variant: normal;
    font-weight: 400;
    line-height: 20px;
}
```

Your headline is in Open Sans

This is a sub heading in Open Sans.

This paragraph is in Open Sans. Keep reading for how to use the buttons to the left. Change your settings, and choose what section you want the font to apply to. Once you are pleased with the settings for that section you can click save. Your selections will remain as you look for another font for another section of this preview.

Another sub heading in Open Sans.

The setting for a paragraph continues down here. There is a blockquote next to it. You may want to make that stand out. The setting for a paragraph continues down here. There is a blockquote next to it. You may want to make that stand out. The setting for a paragraph continues down here. There is a blockquote next to it. You may want to make that stand out.

Make other Open Sans text stand out!

```
/* This text is in Open Sans */
.class {
    font-family: Open Sans;
}
```

Weight

- ✓ Select One:
Normal
Bold
Bolder
Lighter

Style

- ✓ Select One:
Normal
Italic
Oblique

Variant

- ✓ Select One:
Normal
Small Caps

```
h1 {  
    font-family: 'Open Sans';  
    font-size: 24px;  
    font-style: normal;  
    font-variant: normal;  
    font-weight: 500;  
    line-height: 26.4px;  
}
```


Open Sans

https://en.wikipedia.org/wiki/Open_Sans

From Wikipedia, the free encyclopedia

Open Sans is a [sans-serif typeface](#) designed by [Steve Matteson](#) and commissioned by [Google](#). According to Google, it was developed with an "upright stress, open forms and a neutral, yet friendly appearance" and is "optimized for legibility across print, web, and mobile interfaces."^[3] Its design is almost identical to that of [Droid Sans](#), with the exception of wider characters and the inclusion of italic variants. Whereas Droid Sans is used primarily in the user interfaces of some [Android phones](#), Open Sans is used in some of Google's web pages as well as its print and web advertisements.

Open Sans is available in a large number of variants for a font with an open license. There are 5 variants for weight (300 Light, 400 Normal, Semi-Bold 600, Bold 700 and Extra Bold 800) and each one has an italic version, totaling 10 variants. There is also a separate font called Open Sans Condensed with 3 width variations.^[4]

Contents [\[hide\]](#)

- [1 Use](#)
- [2 Unicode coverage](#)
- [3 References](#)
- [4 External Links](#)

Open Sans

Open Sans

Aa Ee Rr

Aa Ee Rr

a

Sycamore

a b c d e f g h i j k l m

n o p q r s t u v w x y z

0 1 2 3 4 5 6 7 8 9

Category	Sans-serif
Classification	Humanist
Designer(s)	Steve Matteson
Foundry	Ascender Corporation
Date created	2010 ^[1]
Date released	2011 ^[2]
License	Apache License 2.0
Website	www.google.com/fonts/specimen/Open+Sans ↗

Challenges Rendering Images on the Web (1)

- Problem 1: PPI
- PPI - Pixels Per Inch, a measurement of the Pixel Density.
- Phone, tablet and desktop screens vary wildly.

Calculation of monitor PPI [\[edit \]](#)

Theoretically, PPI can be calculated from knowing the diagonal size of the screen in inches and the resolution in pixels (width and height). This can be done in two steps:

1. Calculate diagonal resolution in pixels using the [Pythagorean theorem](#):

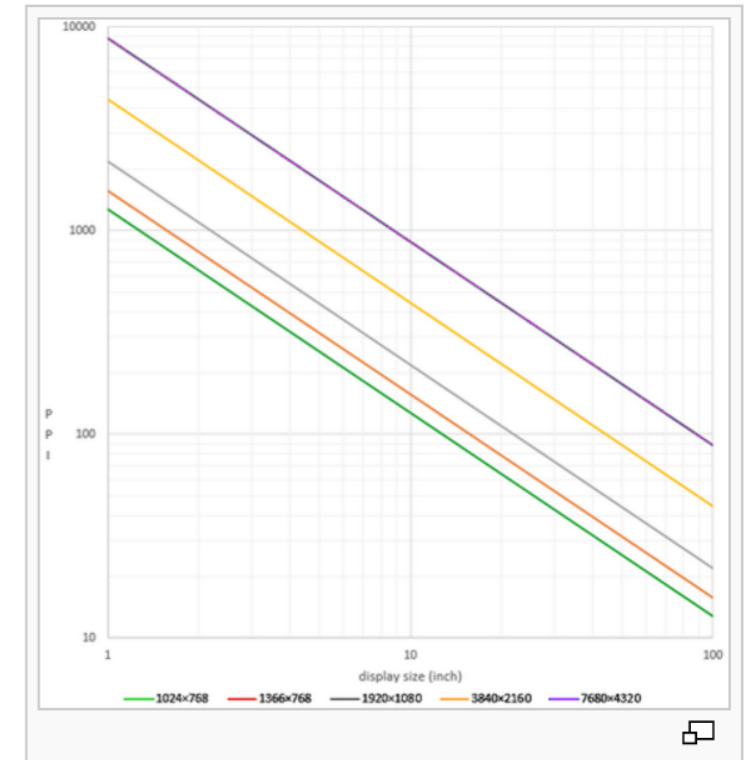
$$d_p = \sqrt{w_p^2 + h_p^2}$$

2. Calculate PPI:

$$PPI = \frac{d_p}{d_i}$$

where

- d_p is diagonal resolution in pixels
- w_p is width resolution in pixels
- h_p is height resolution in pixels
- d_i is diagonal size in inches (this is the number advertised as the size of the display).

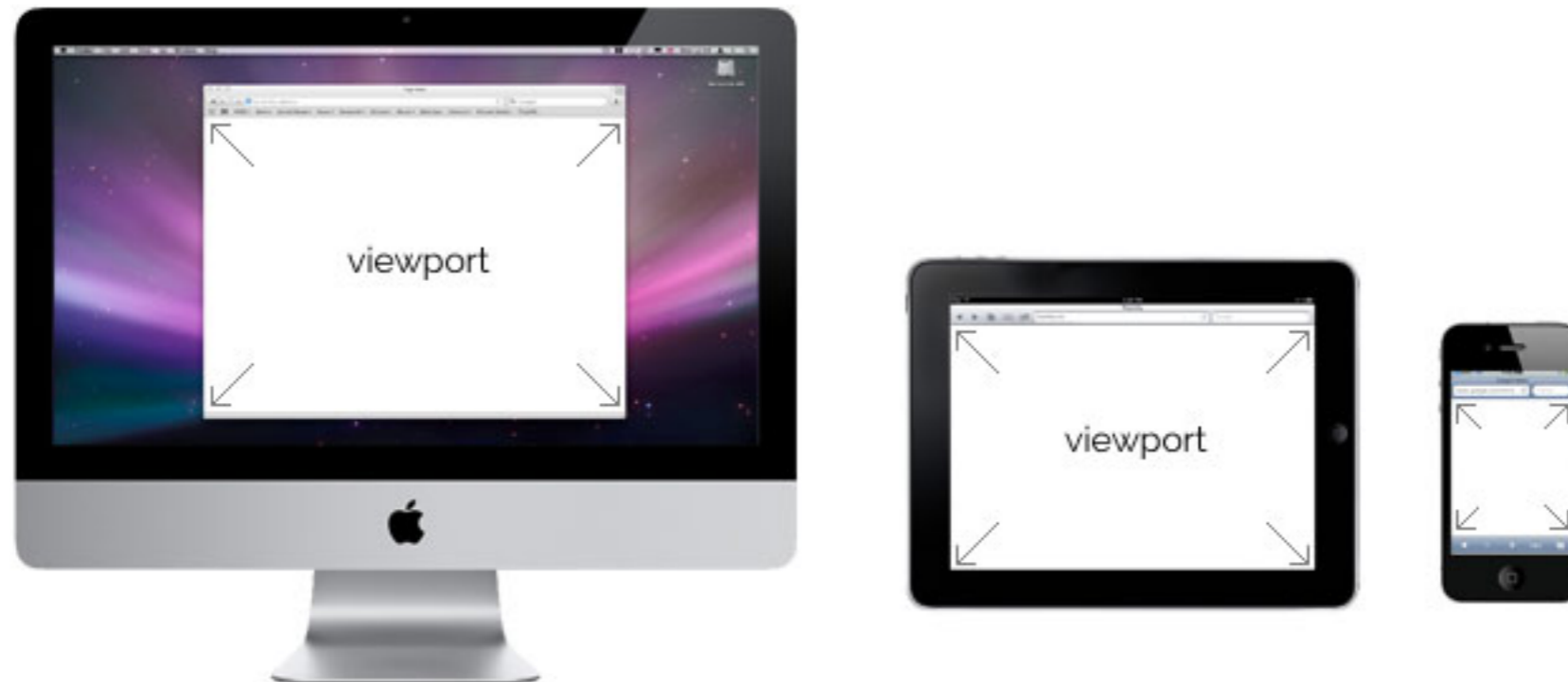


PPI also applied to Image Files

- Eg. Google Android developer documentation groups displays by their approximate pixel densities into the following categories:
 - LDPI: Low density, ~120 dots per inch
 - MDPI: Medium density, ~120-160 dots per inch
 - TVDPI: Medium High density, ~160-213 dots per inch
 - HDPI or HiDPI: High density, ~213-240 dots per inch
 - XHDPI: eXtra High density, ~240-320 dots per inch
 - XXHDPI: eXtra eXtra High density, ~320-480 dots per inch
 - XXXHDPI: eXtra eXtra eXtra High density, ~480-640 dots per inch

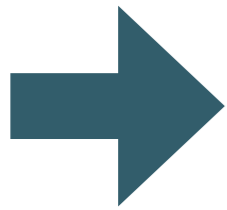
Challenges Rendering Images on the Web (2)

- Problem 2: The 'Viewport'
- The browser windows may be a fixed size - on phones & tablets for instance - and dependent of the model/make
- On a desktop the user can of course change the browser dimensions



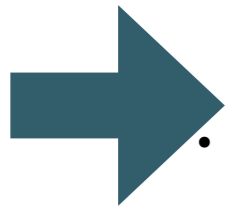
Solutions

- Solution 1: Ignore differences - images renders with simple `` element and rendered 'as is'.



images look appropriate on a small subset of devices

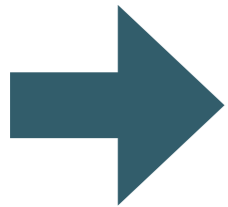
- Solution 2: Set a 'height' property in the `` element. The image will be resized (but not distorted) to the specified dimensions.



- Image looks appropriate on specific pixel density screens (but not on others)

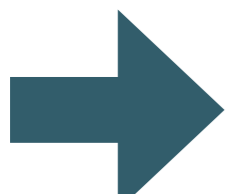
- Browser has to process the image - resizing it. This may consume resources (processor, battery)

- Solution 3: use Javascript



requires 'programmed' instead of 'declarative' solution

- Solution 4: use **srcset** attribute and/or **<picture>** element



Support still building in browsers - but 'polyfills' available

<picture> element

- Offers a declarative approach towards image resource loading.
- Gives web developers more flexibility in specifying image resources.

- *Art direction-based selection*
 - Is this a mobile device held in a portrait orientation or a wide desktop monitor? Load an image that is optimized for the given screen dimensions.
- *Device-pixel-ratio-based selection*
 - Does the device have a high DPI display? Load a higher resolution image.
- *Viewport-based selection*
 - Is the image meant to always fill a fixed proportion of the viewport? Load images relative to the viewport.
- *Image format-based selection*
 - Can the browser support additional image file types that offer performance boosts such as smaller file sizes? Load an alternative image file.

“Art Direction”

Instead of having one image that is scaled up or down based on the viewport width, multiple images can be designed to more appropriately fill the browser viewport



Using only one image that is scaled up or down based on the viewport width.



Use several different images to more appropriately fill the browser viewport.

```
img {  
  max-width: 100%;  
  height: auto;  
}
```


<picture> element

- The <picture> element has no unique attributes of its own - it requires a <source> & elements.
- The <source> element can be used for loading media such as video and audio and images

```
<picture>
  <source
    media="(min-width: 650px)"
    srcset="images/iot/devices/devices-modules-wide.png">
  <source
    media="(min-width: 465px)"
    srcset="images/iot/devices/devices-modules.png">
  
</picture>
```

<source> element

- **srcset**

- Accepts a single image file path

- **media**

- Accepts a 'media query' which will be matched against device

```
<picture>
  <source
    media="(min-width: 650px)"
    srcset="images/iot/devices/devices-modules-wide.png">
  <source
    media="(min-width: 465px)"
    srcset="images/iot/devices/devices-modules.png">
  
</picture>
```

- The element is used in <picture> as the fallback in case a browser does not support the picture element or if no source element tags are matched.

srcset

- Support for high resolution displays using pixel density descriptors such as 1x, 1.5x, 2x, and 3x.
- Applies to both `` and `<source>` elements.

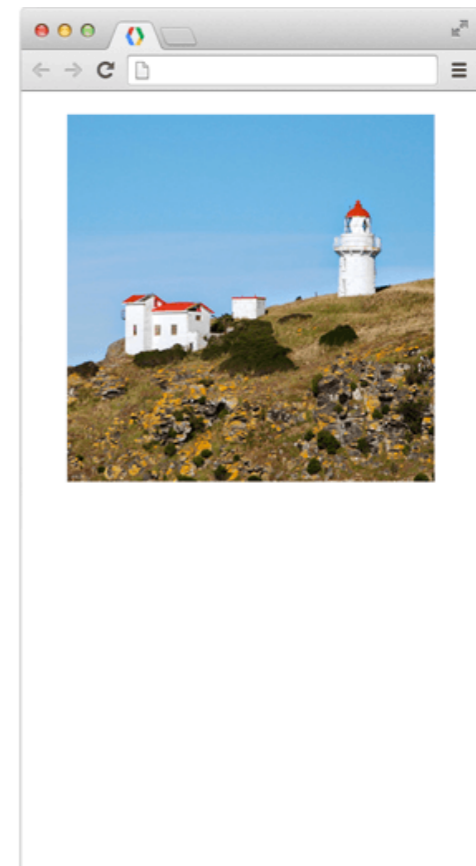
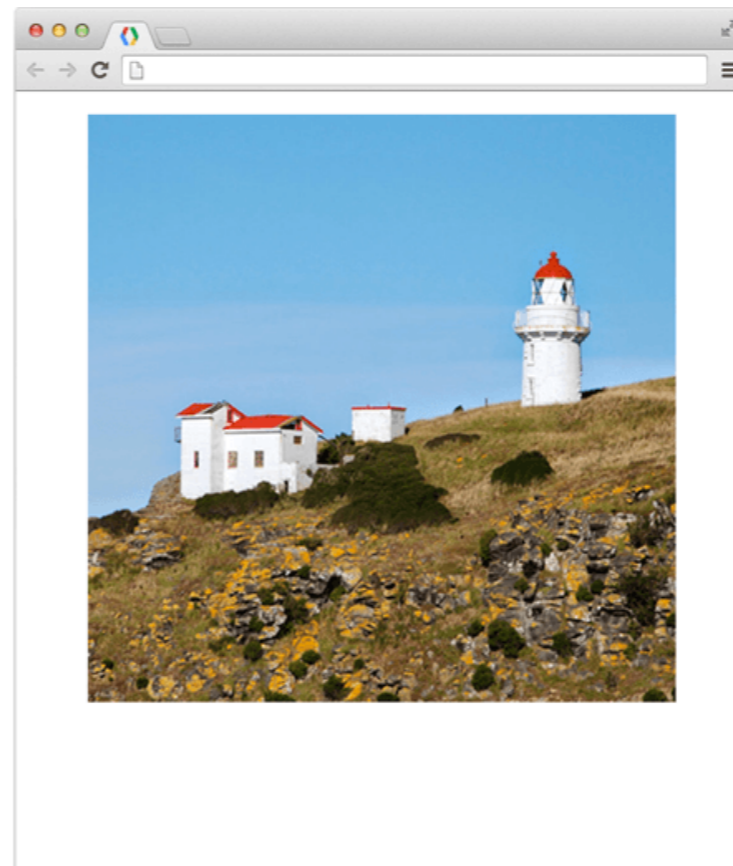
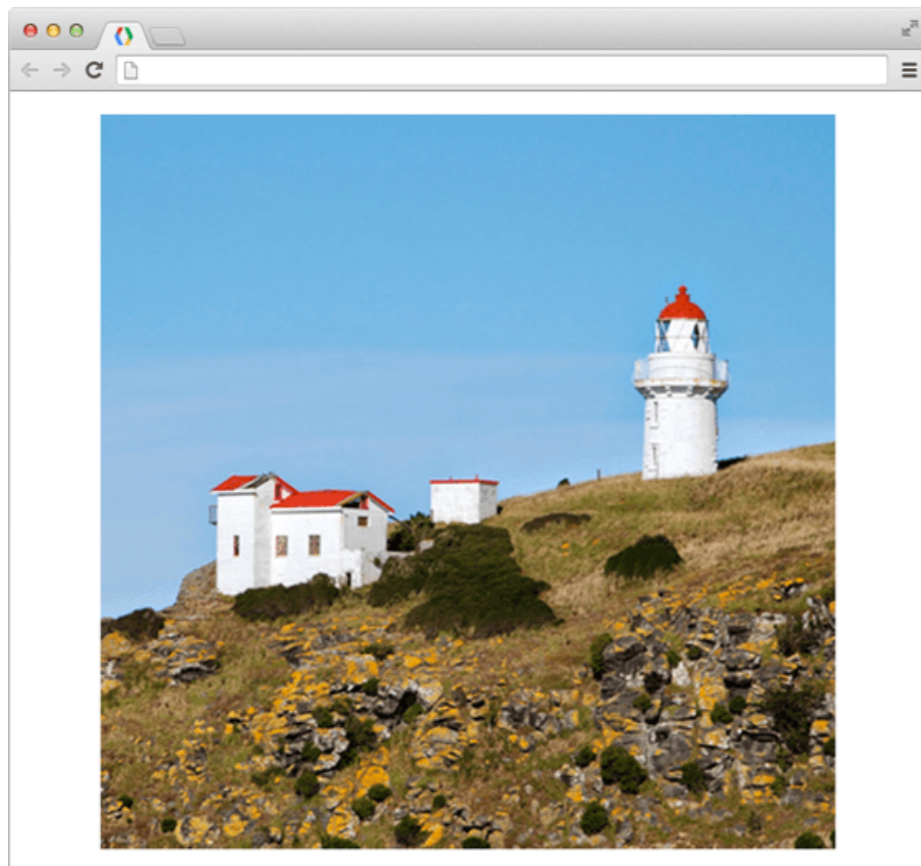
```
<picture>
  <source
    media="(min-width: 650px)"
    srcset="images/kitten-stretching.png,
           images/kitten-stretching@1.5x.png 1.5x,
           images/kitten-stretching@2x.png 2x">
  <source
    media="(min-width: 465px)"
    srcset="images/kitten-sitting.png,
           images/kitten-sitting@1.5x.png 1.5x
           images/kitten-sitting@2x.png 2x">
  
</picture>
```

 srcset examples

The viewport on the left is approx. 800px wide. The browser will load lighthouse-640.jpg unless the device pixel ratio is 2x—in which case, lighthouse-1280.jpg will be loaded instead.

```

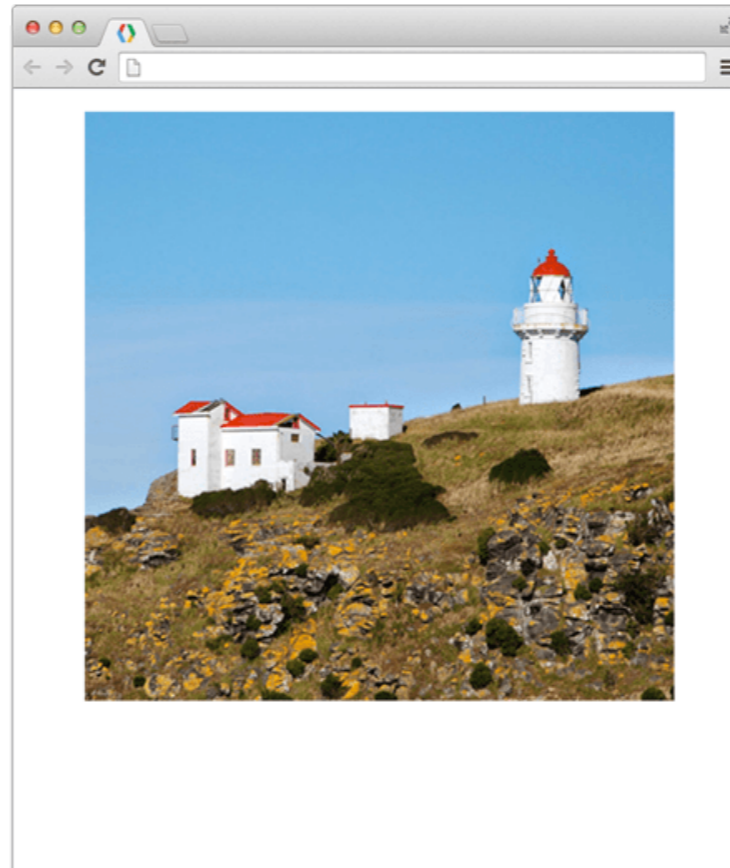
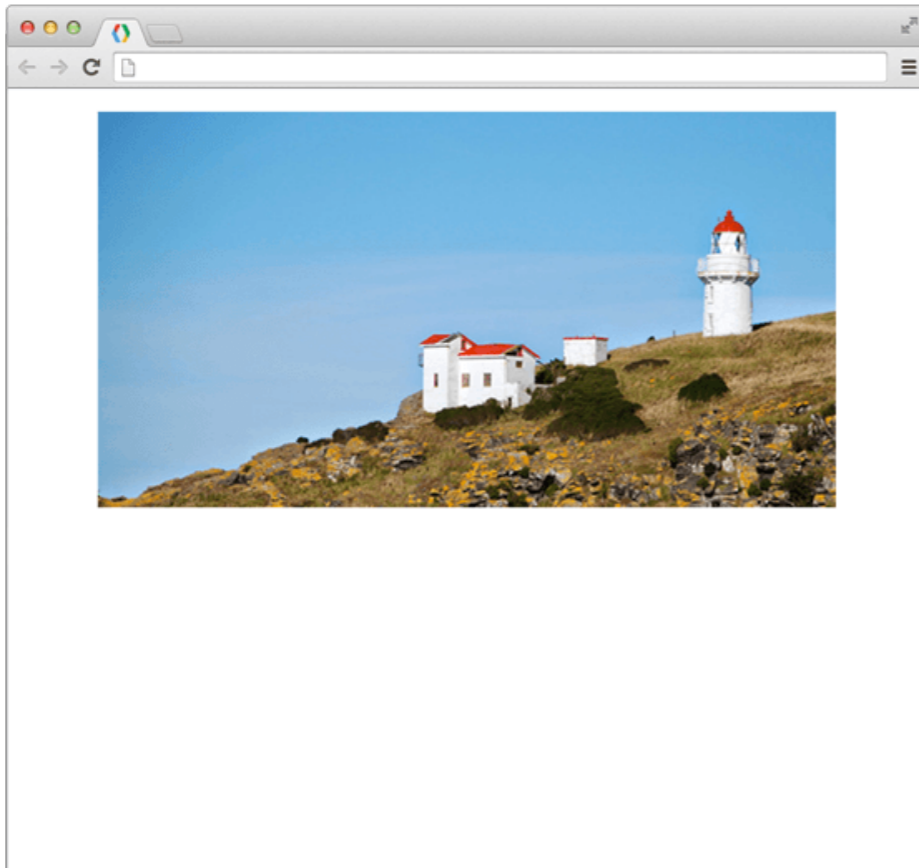
```



<picture> example

The viewport on the left is above 800px wide so a landscape version of the lighthouse photo will be displayed.

```
<picture>
  <source media="(min-width: 800px)"
    sizes="80vw"
    srcset="lighthouse-landscape-640.jpg 640w,
           lighthouse-landscape-1280.jpg 1280w,
           lighthouse-landscape-2560.jpg 2560w">
  
</picture>
```






Picturefill

A RESPONSIVE IMAGE POLYFILL

The [picture element](#), [srcset](#) and [sizes attributes](#), and associated features allow web developers to deliver an appropriate image to every user depending on a variety of conditions like screen size, viewport size, screen resolution, and more. Picturefill enables support for the [picture](#) element and associated features in browsers that do not yet support them, so you can start using them today!

Picturefill development is sponsored by [filament group](#) and  [bocoup](#), and maintained by the [Picturefill Team](#). Ongoing discussion of the project is conducted via [Slack](#).

CONTRIBUTING, BUG REPORTS, AND MORE INFORMATION

For more information on the development of Picturefill and how you can file bugs or contribute fixes, check out [the project on GitHub](#).

- Support for Picture elements in older browsers via ‘Polyfills’
- A Javascript library to permit use of <picture>
- Disabled if browser has native support